



## Ex CERTIFICATED BREATHING&DRAINING DEVICE

EXPLOSION-PROOF ENCLOSURE ACCESSORIES

en

06 - 2016

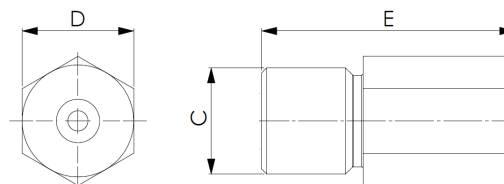
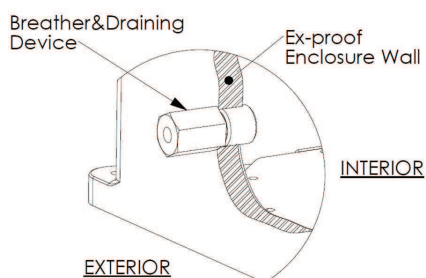


### DESCRIPTION

Breathing&draining devices which permits an exchange between the atmosphere within an enclosure and the surrounding atmosphere or permits liquids to flow out from an enclosure and which maintains the integrity of the type of protection.

It is suitable for the installation in the industrial plants with potentially hazardous atmosphere classified as Zone 1 and Zone 2 for gases and Zone 21 and Zone 22 for combustible dusts.

### INSTALLATION SCHEME



### SPECIFICATIONS

EXPLOSION PROTECTION

|                      |   |
|----------------------|---|
| <b>Conformity</b>    | ATEX Directive ATEX2014/34/UE   |
| <b>Certification</b> | ATEX - INE 12ATEX9013U<br>IECEX - INE 12.0002U<br>Ex TR CU - TC RU C-IT.ГБ05.В.00640<br>North American & Canadian in progress |
| <b>Marking</b>       | II 2 GD<br>Ex-db IIC T6/T5/T4 Gb<br>Ex-e IIC Gb<br>Ex-tb IIIC T85°C/100°C/135°C Db IP66                                       |

TECHNICAL DATA

|                            |  |
|----------------------------|--|
| <b>Ambient Temperature</b> | ATEX -60°C / +65°C<br>IECEX -60°C / +65°C  |
| <b>Material</b>            | Stainless steel AISI 304 or AISI 316L<br>Brass CW614N-MS<br>Hastelloy<br>Inconel |
| <b>IP Rating</b>           | IP66   |
| <b>Sealing:</b>            | O-Ring made in Silicone (Optional)   |

| CATALOG NO.        | C        | D  | E  |
|--------------------|----------|----|----|
| <b>VS-61090-1</b>  | 1/4" NPT | 17 | 50 |
| <b>VS-61090-4</b>  | 1/2" NPT | 22 | 50 |
| <b>VS-61090-5</b>  | 1/2" ISO | 22 | 50 |
| <b>VS-61090-9</b>  | 1/2" NPT | 22 | 50 |
| <b>VS-61090-10</b> | 1/2" ISO | 22 | 50 |
| <b>VS-61090-11</b> | 1/8" NPT | 17 | 50 |
| <b>VS-61090-14</b> | M25      | 27 | 62 |
| <b>VS-61090-15</b> | 3/4" NPT | 27 | 62 |
| <b>VS-61090-17</b> | M20      | 22 | 50 |

### APPLICATION NOTE

1. Permissible maximum enclosure volume is 68 lt for IIC and 150 lt for IIB+H2.