



## DESCRIPTION

The Ex-protection series pushbuttons are suitable for the use with Ex-d enclosures which can be installed in the industrial plants with potentially hazardous atmosphere classified as Zone 1 and Zone 2 for gases and Zone 21 and Zone 22 for combustible dusts. Typically utilized on the enclosures for custom control applications. Installation is easy and secured. Regarding to enclosure wall thickness, two different lengths are available. Both pushbutton body and the drive shaft are made in stainless steel to ensure operational reliability and a longer lifetime.

Possibility of having multiple contacts.

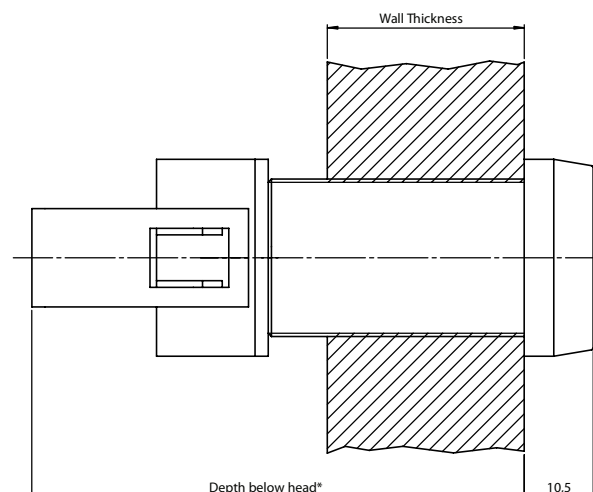
Available button colors are Red, Green, Yellow, Blue, Black and White.

Supplied fully with contact block.

## SPECIFICATIONS

<b>Conformity Certification</b>	ATEX Directive ATEX2014/34/EU	
	ATEX	- INERIS 14ATEX9013U
	IECEX	- INE 14.0032U
<b>Marking</b>	I M2	
	Ex-db I Mb	
	II 2 GD	
	Ex-db IIC Gb	
	Ex-tb IIIC Db IP66	
<b>Standards</b>	IEC 60079-0:2011	EN 60079-0:2013
	IEC 60079-1:2014	EN 60079-1:2014
	IEC 60079-31:2013	EN 60079-31:2014
<b>Ambient Temperature</b>	ATEX -60°C / +60°C	
	IECEX -60°C / +60°C	
<b>Material of Body</b>	Stainless steel AISI 304 or AISI 316L	
<b>Material of Drive Shaft</b>	Stainless steel AISI 304 or AISI 316L	
<b>Threading</b>	M24x1.5 (Standard)	
	½", M20x1.5, M25x1.5, M32x1.5 (On Request)	
<b>IP Rating</b>	IP66	
<b>Connection</b>	Screw clamp terminals	

## INSTALLATION SCHEME



\*Long Series is 75mm, Short Series is 66mm.

## NOTE

\*Installation must be carried out by approved and qualified staff only.

## ORDER CODE

DIMENSION	COLOR	CONTACT
PNNL Long series pushbutton	Z Black ●	C1 1 NO
PNNS Short series pushbutton	W White ●	C2 1 NC
	Y Yellow ●	C3 1 NO + 1 NC
	R Red ●	C4 2 NO
	G Green ●	C5 2 NC
	B Blue ●	

## EXAMPLE

**PNNL G C5**

(Long series, green color pushbutton with 2 NC contact)

\*Different contact combinations are available, ask technical office.