



## Ex CERTIFICATED FTVS FLAME ARRESTOR

EXPLOSION-PROOF ENCLOSURE ACCESSORIES

en

01 - 2020

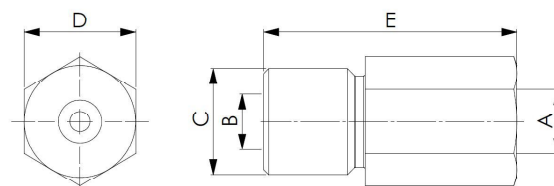
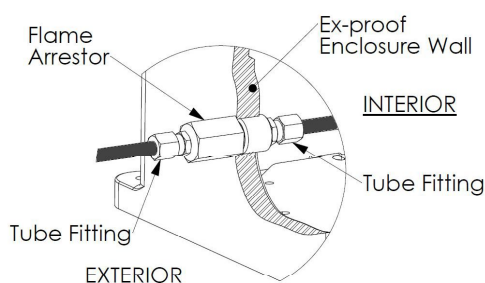


### DESCRIPTION

Flame arrestor is a safety device purposed to prevent flame propagation inside process lines of a system to avoid an ignition. It provides connection of tubing systems for electro/pneumatic and gas/liquid analysis devices through the wall of the explosionproof enclosure. Pressure switches, moisture analyzers and gas analyzers/sensors are the typical applications.

It is suitable for the installation in the industrial plants with potentially hazardous atmosphere classified as Zone 1 and Zone 2 for gases and Zone 21 and Zone 22 for combustible dusts.

### INSTALLATION SCHEME



### SPECIFICATIONS

EXPLOSION PROTECTION	<b>Conformity</b>	ATEX Directive ATEX2014/34/UE
	<b>Certification</b>	ATEX - INERIS 12ATEX9013U IECEx - INE 12.0002U  ISO 16852 : 2016
	<b>Marking</b>	II 2 GD Ex-db IIC T6/T5/T4 Gb Ex-eb IIC Gb Ex-tb IIIC T85°C/100°C/135°C Db IP66
TECHNICAL DATA	<b>Ambient Temperature</b>	ATEX -60°C / +65°C IECEx -60°C / +65°C
	<b>Material</b>	Stainless steel AISI 304 or AISI 316L Brass CW614N-MS Hastelloy Inconel
	<b>IP Rating</b>	IP66
	<b>Sealing:</b>	O-Ring made in Silicone (Optional)

CATALOG NO.	A	B	C	D	E
<b>FTVS-61090-1</b>	1/4" NPT	Ø8 max.	1/4" NPT	17	62
<b>FTVS-61090-2</b>	1/4" NPT	Ø8 max.	1/4" ISO	17	62
<b>FT-61090-3</b>	1/4" ISO	1/4" ISO	1/2" NPT	22	60
<b>FT-61090-4</b>	1/8" NPT	1/4" NPT	1/2" NPT	22	50
<b>FT-61090-5</b>	1/8" NPT	1/4" NPT	1/2" ISO	22	50
<b>FT-61090-6</b>	1/8" ISO	1/4" ISO	1/2" ISO	22	50
<b>FT-61090-7</b>	1/8" NPT	1/4" NPT	M22	22	50
<b>FT-61090-8</b>	1/4" NPT	1/4" NPT	1/2" NPT	22	60
<b>FTVS-61090-11</b>	1/4" NPT	Ø3,5	1/8" NPT	17	62
<b>FT-61090-12</b>	M16	M16	M20	22	62
<b>FT-61090-13</b>	1/4" NPT	3/8" NPT	M20	22	62
<b>FT-61090-14</b>	M16	M20	M25	27	62
<b>FT-61090-15</b>	1/2" NPT	1/2" NPT	3/4" NPT	27	62
<b>FTVS-61090-16</b>	1/4" NPT	Ø8 max.	1/4" NPT	22	56

ORDER EXAMPLE:  
FT-61090-8 A (material AISI 316L)

Material Table	CODE	MATERIAL
	A	AISI Series 316L Steel
	C	AISI Series 304 Steel
	B	Brass
	H	Hastelloy
I	Inconel	

### APPLICATION NOTE

1. Permissible maximum enclosure volume is 68 lt for IIC and 150 lt for IIB+H2.
2. Maximum flow pressure: 40 bar
3. Pressure drop: 0.09 bar at 17 lt/min