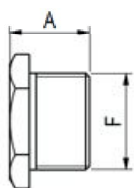




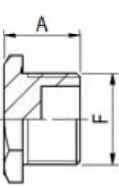
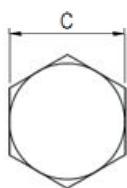
## DESCRIPTION

Blanking elements are suitable for closing entries that are not intended to be always used on pipings and Ex d, Ex db, Ex e, Ex eb or Ex tb enclosures, so that their flameproof properties are maintained

They are suitable for the installation in the industrial plants with potentially hazardous atmosphere classified as Zone 1 and Zone 2 for gases and Zone 21 and Zone 22 for combustible dusts.



THM/THG/THU BLANKING ELEMENT TYPE  
AVAILABLE IN AISI 304/316L



TVM/TVG/TVU BLANKING ELEMENT TYPE  
AVAILABLE IN BRASS

## MATERIAL CHOICE

1. Stainless steel AISI 316L
2. Stainless steel AISI 304
3. Brass
4. Nickel plated/anodized brass

"x" for material choice

| TYPE           | F          | A  | C  |
|----------------|------------|----|----|
| <b>THM/TVM</b> |            |    |    |
| -X001          | M16        | 23 | 20 |
| -X002          | M20        | 23 | 24 |
| -X003          | M25        | 23 | 30 |
| -X004          | M32        | 24 | 36 |
| -X005          | M40        | 24 | 45 |
| -X006          | M50        | 26 | 55 |
| -X007          | M63        | 26 | 70 |
| <b>THG/TVG</b> |            |    |    |
| -X001          | 1/4"       | 23 | 20 |
| -X002          | 3/8"       | 23 | 24 |
| -X003          | 1/2"       | 26 | 30 |
| -X004          | 3/4"       | 26 | 36 |
| -X005          | 1"         | 30 | 45 |
| -X006          | 1 1/4"     | 30 | 55 |
| -X007          | 1 1/2"     | 30 | 55 |
| -X008          | 2"         | 31 | 70 |
| -X009          | 2 1/2"     | 31 | 80 |
| <b>THU/TVU</b> |            |    |    |
| -X001          | 7-16 - 20  | 19 | 20 |
| -X002          | 1/2 - 20   | 19 | 20 |
| -X003          | 3/4 - 16   | 23 | 24 |
| -X004          | 1 - 12     | 23 | 30 |
| -X005          | 1 1/4 - 12 | 29 | 36 |
| -X006          | 1 1/2 - 12 | 29 | 45 |

Metric ISO 262 - G ISO 228 - UNF ASME B1.1

## SPECIFICATIONS

EXPLOSION PROTECTION

|                      |                                                                                                        |
|----------------------|--------------------------------------------------------------------------------------------------------|
| <b>Conformity</b>    | Directive ATEX2014/34/UE                                                                               |
| <b>Certification</b> | ATEX INERIS 17ATEX0012X<br>IECEX INE 15.0016X                                                          |
| <b>Marking</b>       | IM2<br>Ex db IMb<br>Ex eb IMb<br><br>II 2 GD<br>Ex db IIC Gb<br>Ex eb IIC Gb<br>Ex tb IIIC Db IP66     |
| <b>Standards</b>     | EN 60079-0 IEC 60079-0<br>EN 60079-1 IEC 60079-1<br>EN 60079-7 IEC 60079-7<br>EN 60079-31 IEC 60079-31 |

TECHNICAL DATA

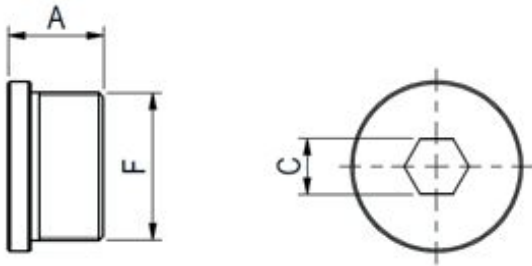
|                            |                                                                                        |
|----------------------------|----------------------------------------------------------------------------------------|
| <b>Ambient Temperature</b> | -60°C / +300°C<br>-30°C / +130°C with NBR O-Ring<br>-60°C / +210°C with silicon O-Ring |
| <b>Material</b>            | Stainless steel AISI 304 or AISI 316L<br>Brass<br>Nickel plated or anodized brass      |
| <b>IP Rating</b>           | IP 66                                                                                  |
| <b>Sealing</b>             | NBR or Silicon O-Ring (Optional)                                                       |

## ORDER EXAMPLE

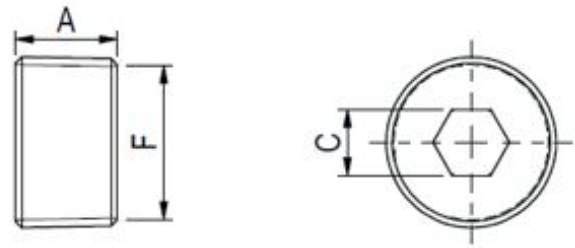
TVM-3002: M20 plug in brass

THU-1001: 7/16-20 UNF plug in AISI 316L

THG-2005: 1" G plug in AISI 304



TRM / TRG / TRU BLANKING ELEMENT TYPE



TNS / TSC BLANKING ELEMENT TYPE

| TYPE       | F          | A  | C  |
|------------|------------|----|----|
| <b>TRM</b> |            |    |    |
| -X001      | M16        | 23 | 8  |
| -X002      | M20        | 23 | 12 |
| -X003      | M25        | 23 | 12 |
| -X004      | M32        | 24 | 14 |
| -X005      | M40        | 24 | 14 |
| -X006      | M50        | 26 | 14 |
| -X007      | M63        | 26 | 14 |
| <b>TRG</b> |            |    |    |
| -X001      | 1/4"       | 23 | 8  |
| -X002      | 3/8"       | 23 | 8  |
| -X003      | 1/2"       | 26 | 12 |
| -X004      | 3/4"       | 26 | 12 |
| -X005      | 1"         | 30 | 14 |
| -X006      | 1 1/4"     | 30 | 14 |
| -X007      | 1 1/2"     | 30 | 14 |
| -X008      | 2"         | 31 | 14 |
| -X009      | 2 1/2"     | 31 | 14 |
| -X010      | 3"         | 34 | 14 |
| -X011      | 4"         | 34 | 14 |
| <b>TRU</b> |            |    |    |
| -X001      | 7-16 - 20  | 19 | 6  |
| -X002      | 1/2 - 20   | 19 | 6  |
| -X003      | 3/4 - 16   | 23 | 12 |
| -X004      | 1 - 12     | 23 | 12 |
| -X005      | 1 1/4 - 12 | 29 | 14 |
| -X006      | 1 1/2 - 12 | 29 | 14 |

Metric ISO 262 - G ISO 228 - UNF ASME B1.1

| TYPE       | F      | A  | C  |
|------------|--------|----|----|
| <b>TNS</b> |        |    |    |
| -X001      | 1/4"   | 16 | 8  |
| -X002      | 3/8"   | 16 | 8  |
| -X003      | 1/2"   | 18 | 12 |
| -X004      | 3/4"   | 18 | 12 |
| -X005      | 1"     | 21 | 16 |
| -X006      | 1 1/4" | 21 | 16 |
| -X007      | 1 1/2" | 24 | 16 |
| -X008      | 2"     | 24 | 16 |
| -X009      | 2 1/2" | 32 | 20 |
| -X010      | 3"     | 32 | 20 |
| -X011      | 4"     | 34 | 20 |
| <b>TSC</b> |        |    |    |
| -X001      | 1/4"   | 16 | 8  |
| -X002      | 3/8"   | 16 | 8  |
| -X003      | 1/2"   | 18 | 12 |
| -X004      | 3/4"   | 18 | 12 |
| -X005      | 1"     | 21 | 16 |
| -X006      | 1 1/4" | 24 | 16 |
| -X007      | 1 1/2" | 24 | 16 |
| -X008      | 2"     | 28 | 16 |
| -X009      | 2 1/2" | 32 | 20 |
| -X010      | 3"     | 34 | 20 |
| -X011      | 4"     | 38 | 20 |

NPT ANSI/ASME B1.20.1 - GK EN10226-2\*  
\*for ATEX only

### ORDER EXAMPLE

TSN-1001: 1/4" NPT plug in AISI 316L

TRG-2005: 1"G plug in AISI 304

TSC-3008: 2" GK plug in brass