

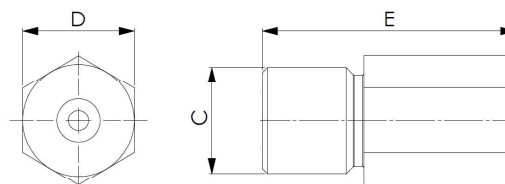
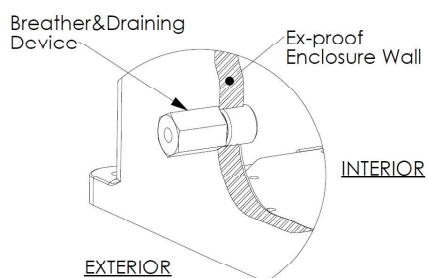


### DESCRIPTION

Breathing&draining devices which permits an exchange between the atmosphere within an enclosure and the surrounding atmosphere or permits liquids to flow out from an enclosure and which maintains the integrity of the type of protection.

It is suitable for the installation in the industrial plants with potentially hazardous atmosphere classified as Zone 1 and Zone 2 for gases and Zone 21 and Zone 22 for combustible dusts.

### INSTALLATION SCHEME



### SPECIFICATIONS

EXPLOSION PROTECTION	<b>Conformity</b>	ATEX Directive ATEX2014/34/UE
	<b>Certification</b>	ATEX - INERIS 12ATEX9013U IECEX - INE 12.0002U
	<b>Marking</b>	II 2 GD Ex-db IIC T6/T5/T4 Gb Ex-eb IIC Gb Ex-tb IIIC T85°C/100°C/135°C Db IP66
TECHNICAL DATA	<b>Ambient Temperature</b>	ATEX -60°C / +65°C IECEX -60°C / +65°C
	<b>Material</b>	Stainless steel AISI 304 or AISI 316L Brass CW614N-MS Hastelloy Inconel
	<b>IP Rating</b>	IP66
	<b>Sealing:</b>	O-Ring made in Silicone (Optional)

CATALOG NO.	C	D	E
<b>VS-61090-1</b>	1/4" NPT	17	50
<b>VS-61090-4</b>	1/2" NPT	22	50
<b>VS-61090-5</b>	1/2" ISO	22	50
<b>VS-61090-9</b>	1/2" NPT	22	50
<b>VS-61090-10</b>	1/2" ISO	22	50
<b>VS-61090-11</b>	1/8" NPT	17	50
<b>VS-61090-14</b>	M25	27	62
<b>VS-61090-15</b>	3/4" NPT	27	62
<b>VS-61090-17</b>	M20	22	50

ORDER EXAMPLE:  
VS-61090-17 B (material brass)

Material Table	CODE	MATERIAL
	A	AISI Series 316L Steel
	C	AISI Series 304 Steel
	B	Brass
	H	Hastelloy
	I	Inconel

### APPLICATION NOTE

1. Permissible maximum enclosure volume is 68 lt for IIC and 150 lt for IIB+H2.