



ILLUMINATED PUSHBUTTON (PNL SERIES)

EXPLOSION-PROOF ENCLOSURE ACCESSORIES

en

01 - 2020



DESCRIPTION

The Ex-protection series illuminated pushbuttons are suitable for the use with Ex-d enclosures which can be installed in the industrial plants with potentially hazardous atmosphere classified as Zone 1 and Zone 2 for gases and Zone 21 and Zone 22 for combustible dusts. Typically utilized on the explosionproof enclosures for custom control & monitoring applications. Installation is easy and secured. M.A.M. illuminated push-buttons are easily viewable even in direct sunlight because of its illumination level. Design features guarantee the safety over a long period of time, also under extreme conditions.

Regarding to enclosure wall thickness, two different lengths are available.

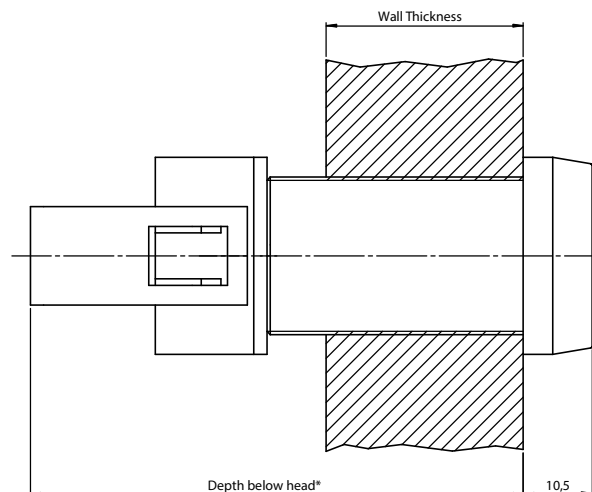
Available LED colors are Red, Green, Yellow, Blue and White.

Supplied fully with LED and contact block.

SPECIFICATIONS

Conformity	ATEX Directive ATEX2014/34/EU	
Certification	ATEX - INERIS 14ATEX9013U	
	IECEX - INE 14.0032U	
Marking	I M2	
	Ex-db I Mb	
	II 2 GD	
	Ex-db IIC Gb	
	Ex-tb IIIC Db IP66	
Standards	IEC 60079-0	EN 60079-0
	IEC 60079-1	EN 60079-1
	IEC 60079-31	EN 60079-31
Ambient Temperature	ATEX -60°C / +60°C	
	IEC-Ex -60°C / +60°C	
Material of Body	Aluminium	
	Stainless steel AISI 304 or AISI 316L	
Threading	M32x1.5 (Standard)	
IP Rating	IP66	
Connection	Screw clamp terminals	

INSTALLATION SCHEME



*Long Series is 75mm, Short Series is 66mm.

NOTE

-Installation must be carried out by approved and qualified staff only.

ORDER CODE

		W	White	●	C5	2 NC	12	12 Volts AC/DC
		Y	Yellow	●	C4	2 NO	24	24 Volts AC/DC
		R	Red	●	C3	1NO + 1NC	48	48 Volts AC/DC
PNLL	Long series	G	Green	●	C2	1 NC	110	110 Volts AC/DC
PNLS	Short series	B	Blue	●	C1	1 NO	220	220 Volts AC/DC
DIMENSION		COLOR		CONTACT		VOLTAGE		

ORDER CODE

* Different color requests are optional, contact technical office.

EXAMPLE

PNLL B C1 110

(Long series, blue color, 1 NO contact, 110 Volts AC/DC)