



## DESCRIPTION

The Ex-protection series LED pilot lights are suitable for the use with Ex-d enclosures which can be installed in the industrial plants with potentially hazardous atmosphere classified as Zone 1 and Zone 2 for gases and Zone 21 and Zone 22 for combustible dusts. Typically utilized on the explosionproof enclosures for custom control & monitoring applications. Installation is easy and secured. M.A.M. pilot lights are easily viewable even in direct sunlight because of its illumination level. Design features guarantee the safety over a long period of time, also under extreme conditions.

Regarding to enclosure wall thickness, two different lengths are available.

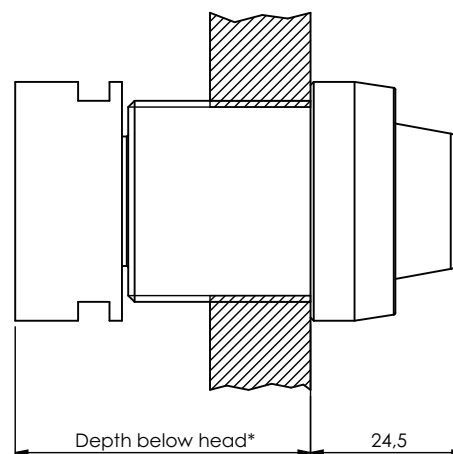
Available LED colors are Red, Green, Yellow, Orange, Blue and White.

Supplied fully with LED and lampholder.

## SPECIFICATIONS

<b>Conformity Certification</b>	ATEX Directive ATEX2014/34/EU	
	ATEX	- INERIS 14ATEX9013U
	IECEx	- INE 14.0032U
<b>Marking</b>	I M2	
	Ex-db I Mb	
	II 2 GD	
	Ex-db IIC Gb	
	Ex-tb IIIC Db IP66	
<b>Standards</b>	IEC 60079-0	EN 60079-0
	IEC 60079-1	EN 60079-1
	IEC 60079-31	EN 60079-31
<b>Ambient Temperature</b>	ATEX	-60°C / +60°C
	IECEx	-60°C / +60°C
<b>Material of Body</b>	Aluminium	
	Stainless steel AISI 304 or AISI 316L	
<b>Threading</b>	M32x1.5 (Standard)	
	M20x1.5, M24x1.5, M25x1.5 (On Request)	
<b>IP Rating</b>	IP66	
<b>Connection</b>	Screw clamp terminals	

## INSTALLATION SCHEME



\*Long Series is 75mm, Short Series is 66mm.

## NOTE

-Installation must be carried out by approved and qualified staff only.

## ORDER CODE

DIMENSION	COLOR	VOLTAGE
LUSL	Long series pilot light	
LUSS	Short series pilot light	
	W	White
	Y	Yellow
	R	Red
	O	Orange
	G	Green
	B	Blue
	220	220 Volts AC/DC
	110	110 Volts AC/DC
	48	48 Volts AC/DC
	24	24 Volts AC/DC
	12	12 Volts AC/DC

## EXAMPLE

LUSL W 220

(Long series, white color, 220 Volts AC/DC pilot light)

\* Different color requests are optional, contact technical office.